

New European Bauhaus
beautiful | sustainable | together

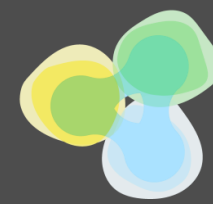


Support to New European Bauhaus Local Initiatives Call

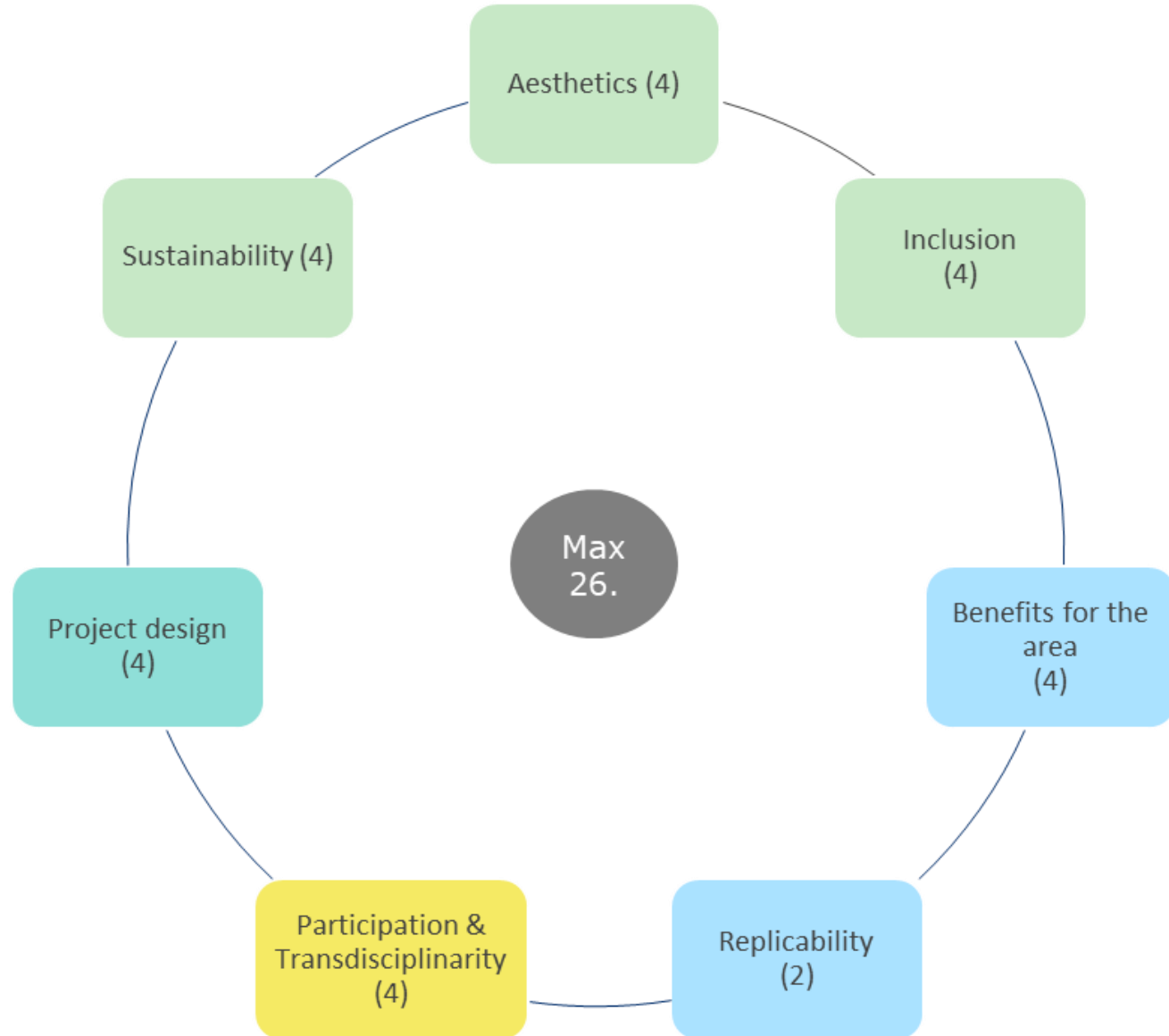
Selection criteria

24.04.2023
online

Selection criteria

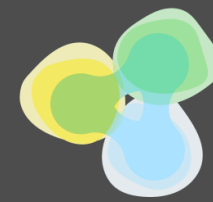


New European Bauhaus
beautiful | sustainable | together



Colour	Criteria category (max 26)
Light Green	NEB core values (max 12)
Light Blue	Added value (max 6)
Yellow	Participation & transdisciplinarity (max 4)
Teal	Project design (max 4)

Steps of the call design process

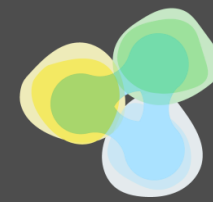


New European Bauhaus
beautiful | sustainable | together



- Define and operationalise formal eligibility
 - Define the “ideal project” vision and operationalise it via criteria
 - Define the “ideal state” for each criterion, including sub-aspects
 - Structure application: how to demonstrate criteria compliance?
 - Design application guidance
 - Design scoring guidance

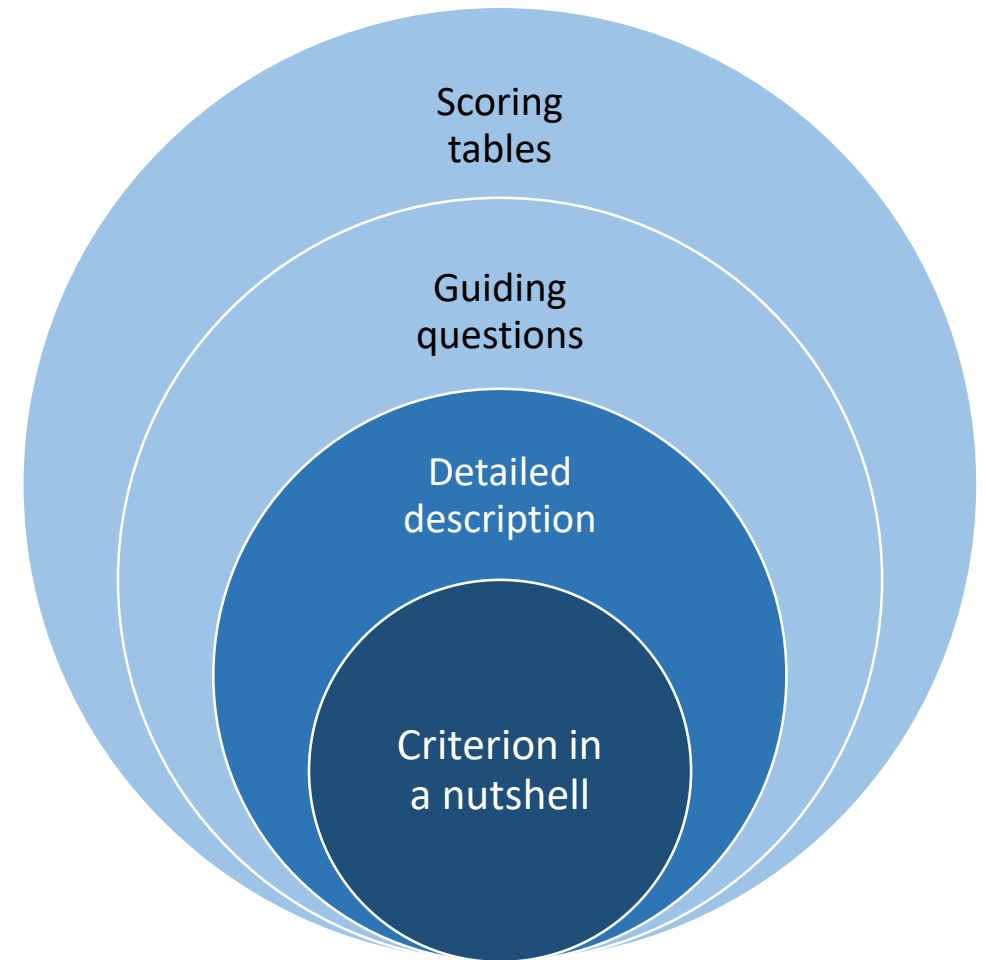
Information layers on criteria



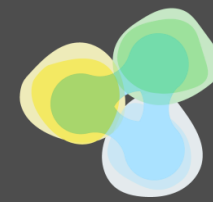
New European Bauhaus
beautiful | sustainable | together



- Criterion in a nutshell – what is it about?
 - In the applicants' guidelines
- Detailed description – what would an ideal project proposal show?
 - In the annex of the applicants' guidelines
- Guiding questions – what questions to consider for scoring?
 - Non-exhaustive list
- Scoring table – stereotypical description of each score



Scoring system



New European Bauhaus
beautiful | sustainable | together



Scoring table – stereotypical description of each score

4	<p>The project idea demonstrates an excellent sense of and level of ambition with regard to aesthetics, e.g.:</p> <ul style="list-style-type: none"> Addresses several of the following three aspects, at least one of them - strongly and ambitiously: <ol style="list-style-type: none"> Style and design, including: <ul style="list-style-type: none"> uses design successfully in relation to the space and its functions, e.g. to enhance cooperation address explicitly issues related to visual comfort or quality of experience beyond functionality Context valorisation and adaptation, including: <ul style="list-style-type: none"> aligns with specific local past as well as current socio-cultural reality connects innovative aesthetics to the cultural heritage of a place emphasises heritage and local uniqueness, the “sense of the place” Sensorial and emotional experiences, including: <ul style="list-style-type: none"> stimulates or creates certain emotions or sensorial experiences underlines the potential of how a place and a community could develop Uses aesthetical means to enhance the overall idea of New European Bauhaus / inspire people and communities to take transformation action Introduces aesthetics as in-built characteristic of the project from the conceptualisation phase Describes the aesthetical concept/vision coherently and in detail, e.g. with convincing implementation/technical detail on material or techniques used / arts represented Provides convincing and high-quality material for the envisioned design to substantiate the text
3	<p>The project idea demonstrates a good sense of and level of ambition with regard to aesthetics, e.g.:</p> <ul style="list-style-type: none"> Addresses at least one of the following three aspects strongly and ambitiously: <ul style="list-style-type: none"> 1) Style and design; 2) context valorisation and adaptation; 3) sensorial and emotional experiences (see further explanations above) Describes the aesthetical concept/vision coherently with sufficient implementation/technical detail Introduces aesthetics as in-built characteristic of the project from the conceptualisation phase Provides some visual material for the envisioned design
2	<p>The project idea demonstrates a fair sense of and level of ambition with regard to aesthetics:</p> <ul style="list-style-type: none"> Addresses one of the following three aspects in a solid and convincing way: <ul style="list-style-type: none"> 1) Style and design; 2) context valorisation and adaptation; 3) sensorial and emotional experiences (see further explanations above)
1	<p>The project idea demonstrates a basic sense of and level of ambition with regard to aesthetics:</p> <ul style="list-style-type: none"> Mentions elements pertaining to at least one of the following three aspects: <ul style="list-style-type: none"> 1) Style and design; 2) context valorisation and adaptation; 3) sensorial and emotional experiences (see further explanations above)
0	<p>The answer to the question includes no aspects relevant to the criterion and/or shows no relation to the specific project.</p>

in the specific framework of the given project is exceptional, and does not leave much room for improvement.

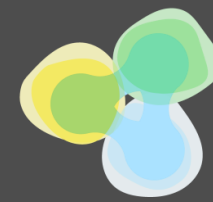
on, but specific improvements are imaginable or some few aspects presentation.

tation of a given criterion, with no signs of distinction.

ner that is well below average.

rmation provided: it is very scarce, irrelevant or not specific to the / (e.g. mere rephrasing of the applicants’ guidelines without an specific project).

Scoring system: NEB value



New European Bauhaus
beautiful | sustainable | together

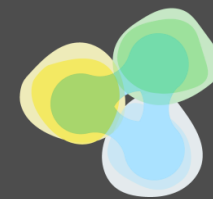


Aesthetics

1. Style and design
2. Context valorisation and adaptation
3. Sensorial and emotional experiences
- 4 - Addresses **several of** the three aspects, at least one of them - strongly and **ambitiously**
- 3 - Addresses at least **one of** the three aspects strongly and ambitiously
- 2 - Addresses **one of** the following three aspects in a solid and convincing way
- 1 - Mentions elements pertaining to at least one of the following three aspects

Please describe the **ambition** of your project regarding aesthetics by valuing beauty and promoting aesthetical value beyond mere functionality in infrastructure elements or public spaces. For example:

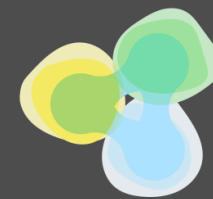
- Through **style and design**
- Through **spatial context valorisation** to increase sense of belonging and place-based pride
- Through increased quality of **sensorial and emotional experience**.



New European Bauhaus
beautiful | sustainable | together



Questions?

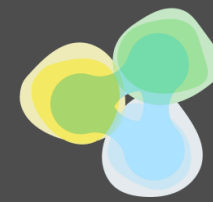


New European Bauhaus
beautiful | sustainable | together



Back-up slides

Scoring system: added value



New European Bauhaus
beautiful | sustainable | together



Benefits for the area of location

- 1 Community benefits
- 2 Linkage to the structural challenges of the area
- 3 Alignment with local and regional strategies
- 4 Fostering action across administrative borders

4 - Covers **all the four** aspects

3 - Covers **either points 1 & 2** or points **3 & 4**, but not both

2 - Covers **any of** the following points in a convincing way

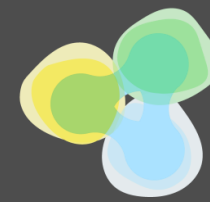
1 - Mentions **any of** the following points in a superficial/general way

Please describe how your project would **benefit the hosting communities** and contribute to **tackling the specific structural challenges** of your area and population.

If applicable: Please indicate, if the project is anchored in any existing local or regional **plans or a wider territorial strategy**, and whether the plan, strategy or programme is linked to the **European Regional Development Fund** or any other **EU initiative** (providing respective links, if possible).

Please also indicate, if you if your project **transcends administrative borders** or otherwise fosters cooperation across administrative units.

Eligibility criteria



New European Bauhaus
beautiful | sustainable | together



Formal criteria for the entities applying

•Project type:

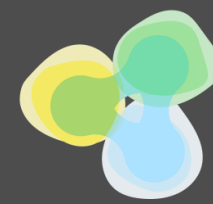
- an existing infrastructure element or public space has been identified
- the idea of how to reconvert it has been selected

•Project characteristics:

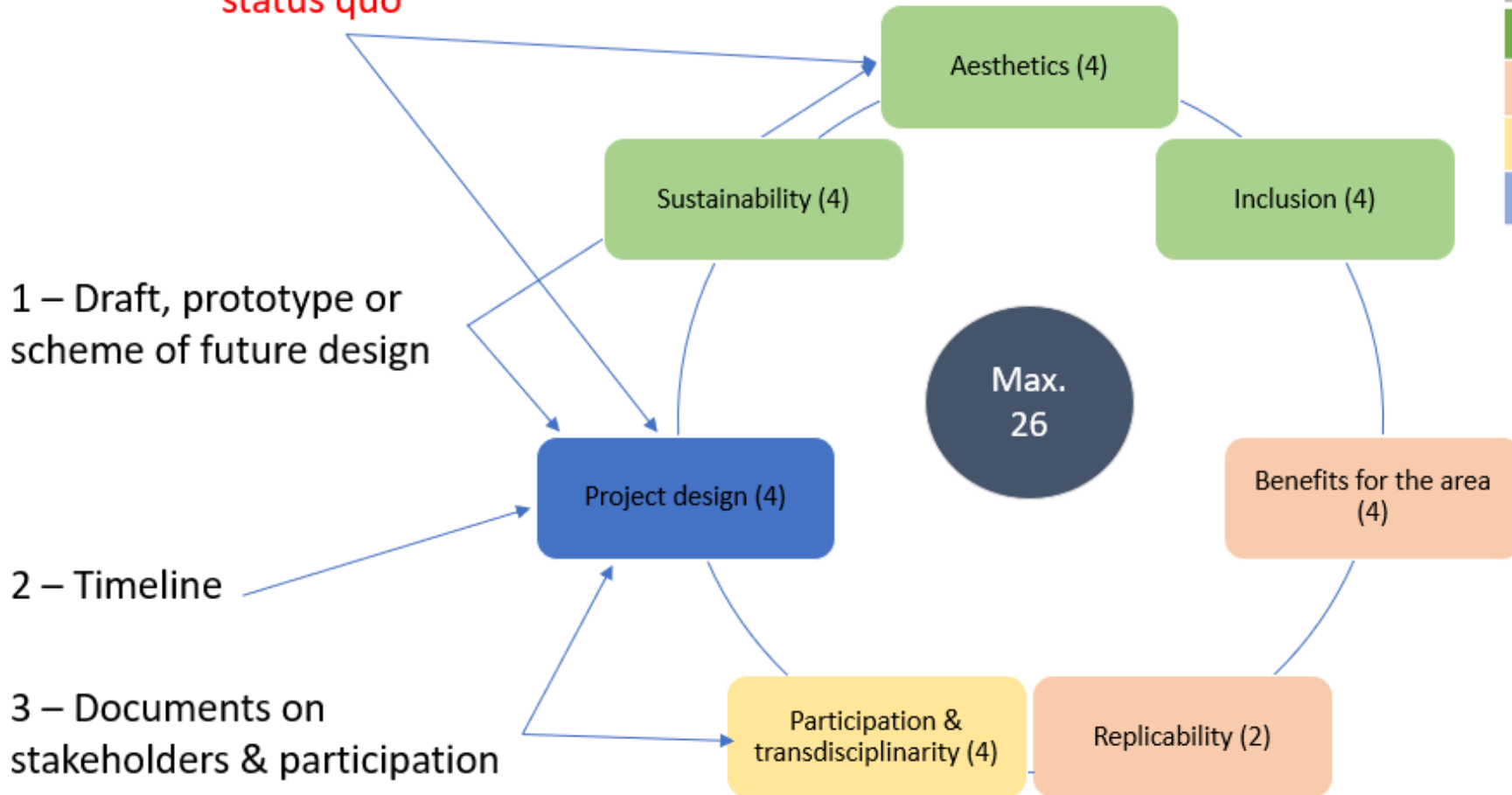
- addressing all three core values of the New European Bauhaus

Eligibility criterion	Question	Yes /No
Geographical scope	Is your project site in an EU Member State?	✓/✗
Type of entities applying	Is the applicant a local public authority (e.g., municipality, city, town, district, county, a group of municipalities or a public entity aggregating municipalities) that has all the legal competences required to implement the project idea submitted?	✓/✗
Size of entities applying	Does the public authority applying have less than 100,000 inhabitants (within a group or a public entity aggregating municipalities: does each public authority have less than 100,000 inhabitants)?	✓/✗
Project type	Have you identified an existing infrastructure element or public space that will be reconverted?	✓/✗
Exclusion of double funding	Have you <i>not</i> already received or are you <i>not</i> already receiving support from the EU that is similar to the support provided through this call?	✓/✗
Language	Can you submit the application in English?	✓/✗
Project characteristics		
Three core values of New European Bauhaus	Can you plausibly describe how your project idea contributes to promoting the three dimensions of New European Bauhaus (Sustainability, Aesthetics and Inclusiveness)?	✓/✗
Four action areas	Can you plausibly argue that your project idea is contributing to <i>at least</i> one of these action areas? <ol style="list-style-type: none">1. Renovation of existing buildings and public spaces in a spirit of circularity and carbon neutrality;2. Preservation and transformation of cultural heritage;3. Adaptation and transformation of buildings for affordable housing solutions;4. Regeneration of urban or rural spaces.	✓/✗
Maturity	Are you presenting a project idea with the required minimal level of maturity, i.e. <ul style="list-style-type: none">• an existing infrastructure element or public space has been identified and the idea of how to reconvert it has been selected;• the political commitment to the project idea has been secured?	✓/✗
Mandatory documents	Can you present the following mandatory documents? <ol style="list-style-type: none">1. Visual documentation of the status quo of the infrastructure element or public space in question;2. Letter of support by the political representative of the applying competent public authority;3. Self-declaration form on the type and the basic data of entity applying.	✓/✗

Application structure



1 - Visuals of status quo



Colour	Criteria category (max. 26)
■	NEB core values (max. 12)
■	Added value (max. 6)
■	Participation & transdisciplinarity (max. 4)
■	Project design (max. 4)

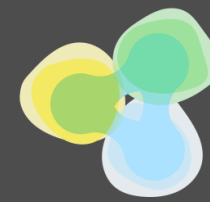
1 – Draft, prototype or scheme of future design

2 – Timeline

3 – Documents on stakeholders & participation

2 - Letter of support by competent public authority

3 - Self-declaration



SCORING TABLES

1. Sustainability	6
2. Aesthetics	7
3. Inclusion	8
4. Benefits for the area of location	10
5. Replicability	12
6. Participatory and transdisciplinary approach	13
7. Project design	14



1. Sustainability

4	<p>The project idea demonstrates an excellent understanding of & level of ambition regarding sustainability:</p> <ul style="list-style-type: none"> Aims for broad sustainability impact, addressing several environmental aspects and tapping into synergy potentials (e.g. carbon footprint, pollution/waste reduction, biodiversity, sustainable mobility) Promotes re-connecting with nature, valuing its importance and encourage a life-centred, rather than just human-centred perspective Is ambitious with regards to sustainability on several project-related choices: the localisation of the project, the functions developed, the material used, and the energy solutions Provides detailed and plausible description of the impact chain, cites scientific basis and quantifiable parameters of the expected impact Introduces sustainability as in-built characteristic of the project from the conceptualisation phase Presents innovative solutions
3	<p>The project idea demonstrates a good understanding of & level of ambition regarding sustainability, e.g.:</p> <ul style="list-style-type: none"> Aims for several aspects of sustainability impact (e.g. carbon footprint, pollution/waste reduction, biodiversity, sustainable mobility) Reflects on re-connecting with nature and valuing its importance Is ambitious with regards to sustainability on at least one of project-related choices: the localisation of the project, the functions developed, the material used, and the energy solutions Provides good description of the impact chain, scientific basis Introduces sustainability as in-built characteristic of the project from the conceptualisation phase
2	<p>The project idea demonstrates a fair understanding of & level of ambition regarding sustainability, e.g.:</p> <ul style="list-style-type: none"> Aims for sustainability impact that is ambitious <u>regarding one</u> sustainability aspect (e.g. carbon footprint, pollution/waste reduction, biodiversity, sustainable mobility) Mentions sustainability with regard to some of the project related choices, e.g. the localisation of the project, the functions developed, the material used, and the energy solutions Provides some reflections on the impact chain
1	<p>The project idea demonstrates a basic understanding of & level of ambition regarding sustainability, e.g.:</p> <ul style="list-style-type: none"> Describes sustainability impact in general terms in clear relation to the project (e.g. regarding aspects such as carbon footprint, pollution/waste reduction, biodiversity, sustainable mobility)
0	<p>The answer to the question includes no aspects relevant to the criterion and/or shows no relation to the specific project.</p>

Timeline

