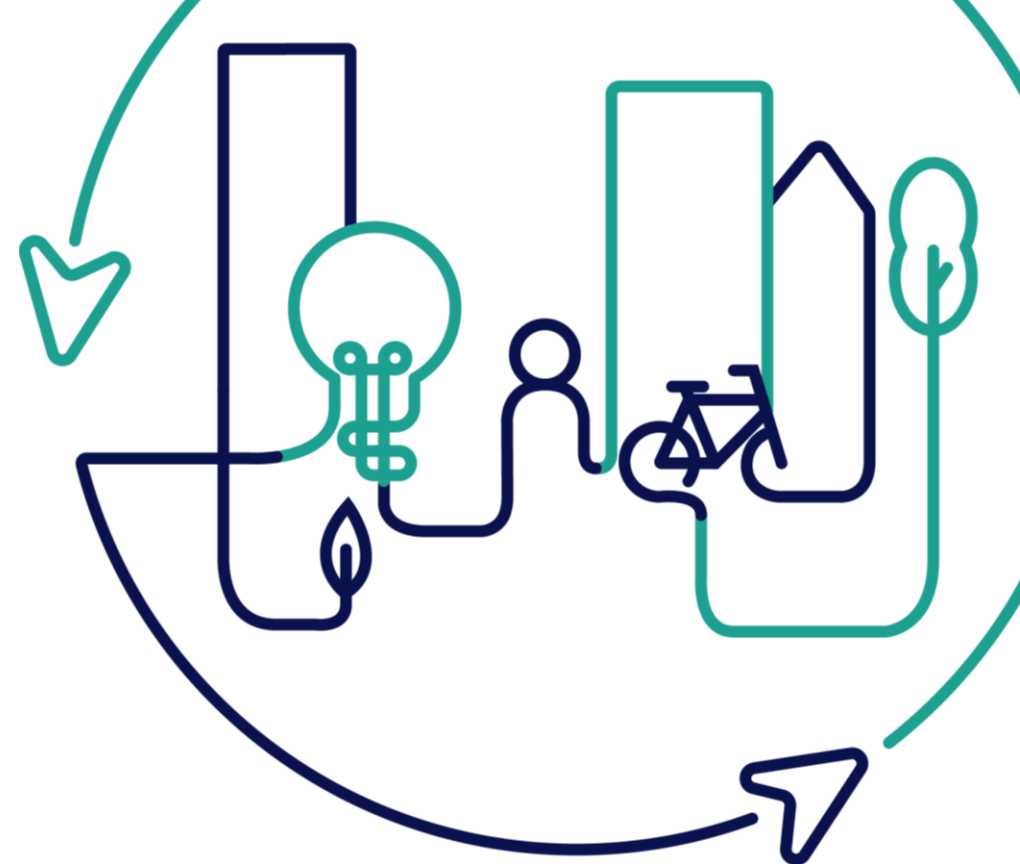


EUROPEAN U R B A N INITIATIVE

Kathleen McCarron
EUI Permanent Secretariat

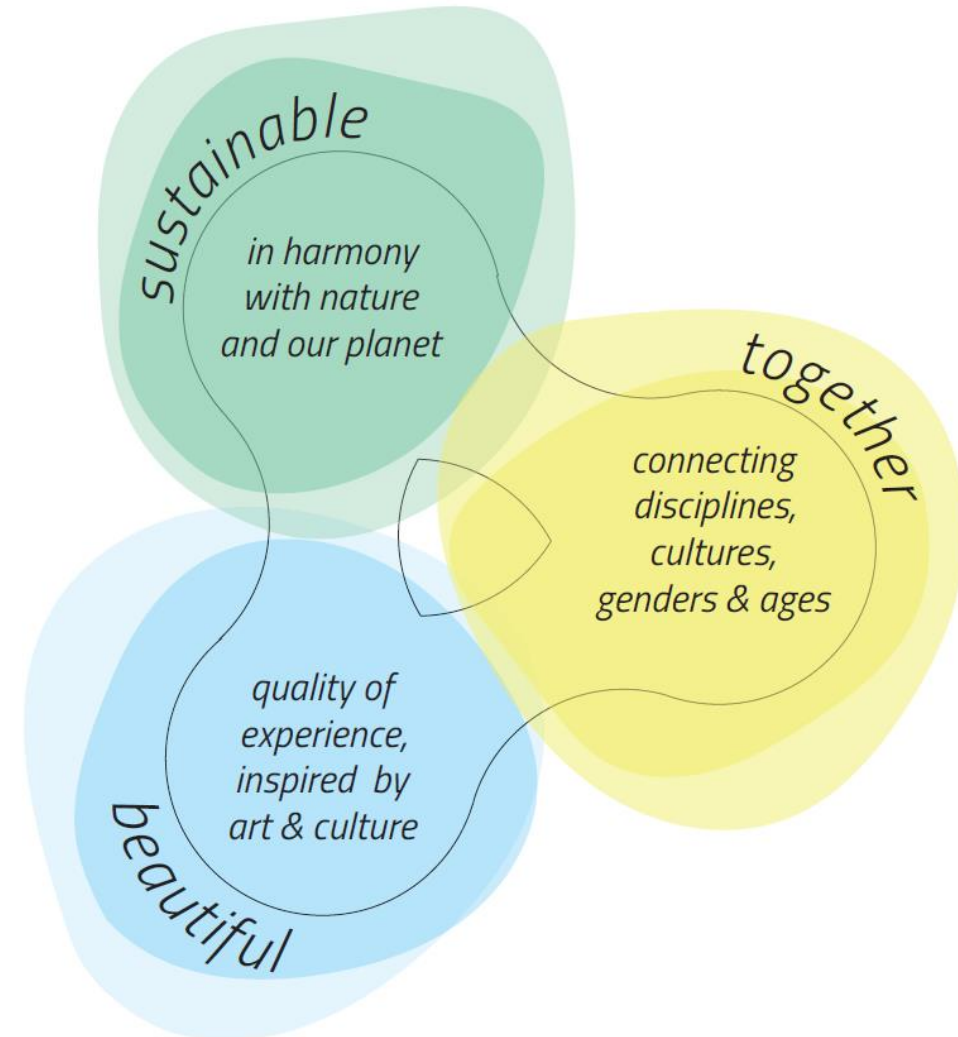


Co-funded by
the European Union

EUI-IA 1st Call for Proposals

Overview

- Call Start Date **10 October 2022**
- Call End Date **19 January 2023**
- Proposals in **support to the New European Bauhaus demonstrators**
- Budget of **50 Million EUR** for 1st Call
- **Project Selection** mid-June 2023
- **New European Bauhaus Festival** 21-22 June 2023
- **Projects implementation begins in March 2024** (Initiation Phase begins September 2023)



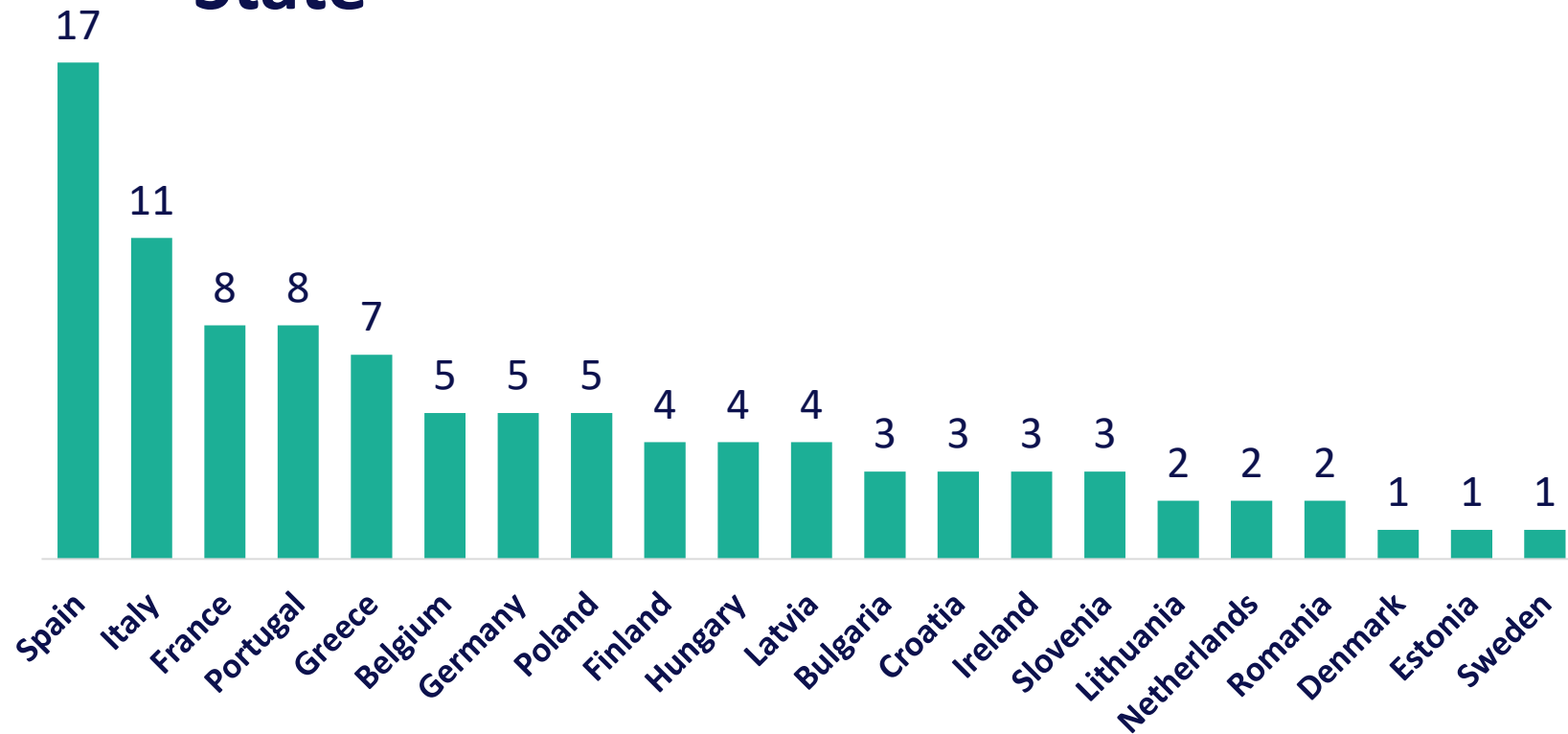
TOR : suggested prompts but not prescriptive

- Constructing or renovating in a spirit of circularity and carbon neutrality
- Preserving and transforming cultural heritage
- Adapting and transforming buildings for affordable housing solutions
- Regenerating urban spaces

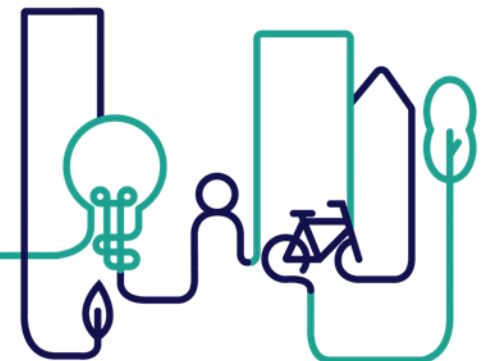


EUI-IA 1st Call for Proposals

Number of Applications by Member State

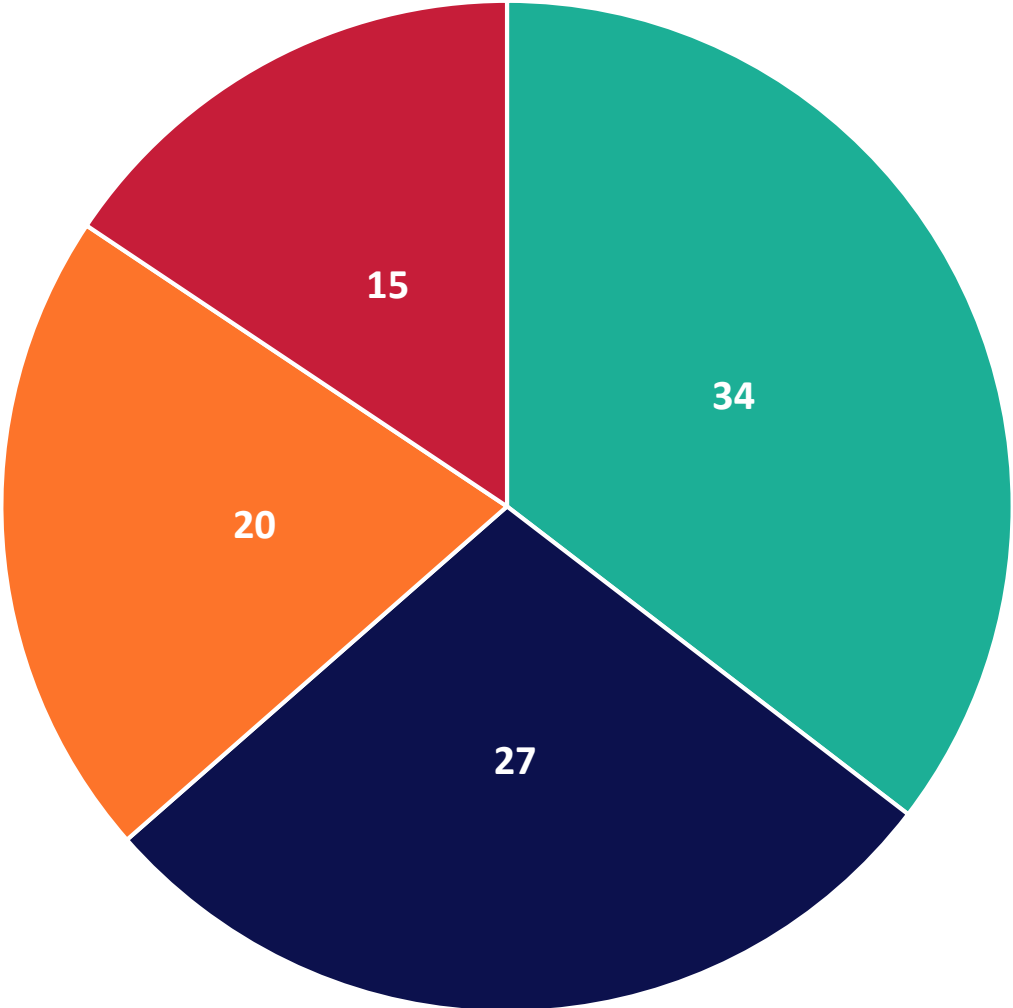


- **99 applications** received with **21 Member States** represented
- **52% applications** received from Spain, Italy, France, Portugal and Greece



EUI-IA 1st Call for Proposals

Number of eligible applications per NEB Prompt



- Regenerating urban spaces
- Preserving and transforming cultural heritage
- Construction and renovation in a spirit of circularity and carbon neutrality
- Adapting and transforming buildings for affordable housing solutions

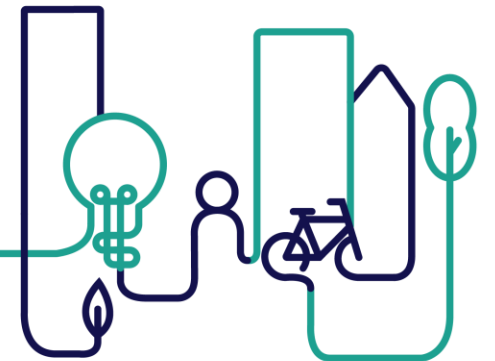
Strategic Assessment Criteria

- **Innovativeness and relevance (30%)**
- **Partnership and co-creation (12%)**
- **Measurability of results and impact (12%)**
- **Sustainability and up-scaling (8%)**
- **Project's Transferability (8%)**

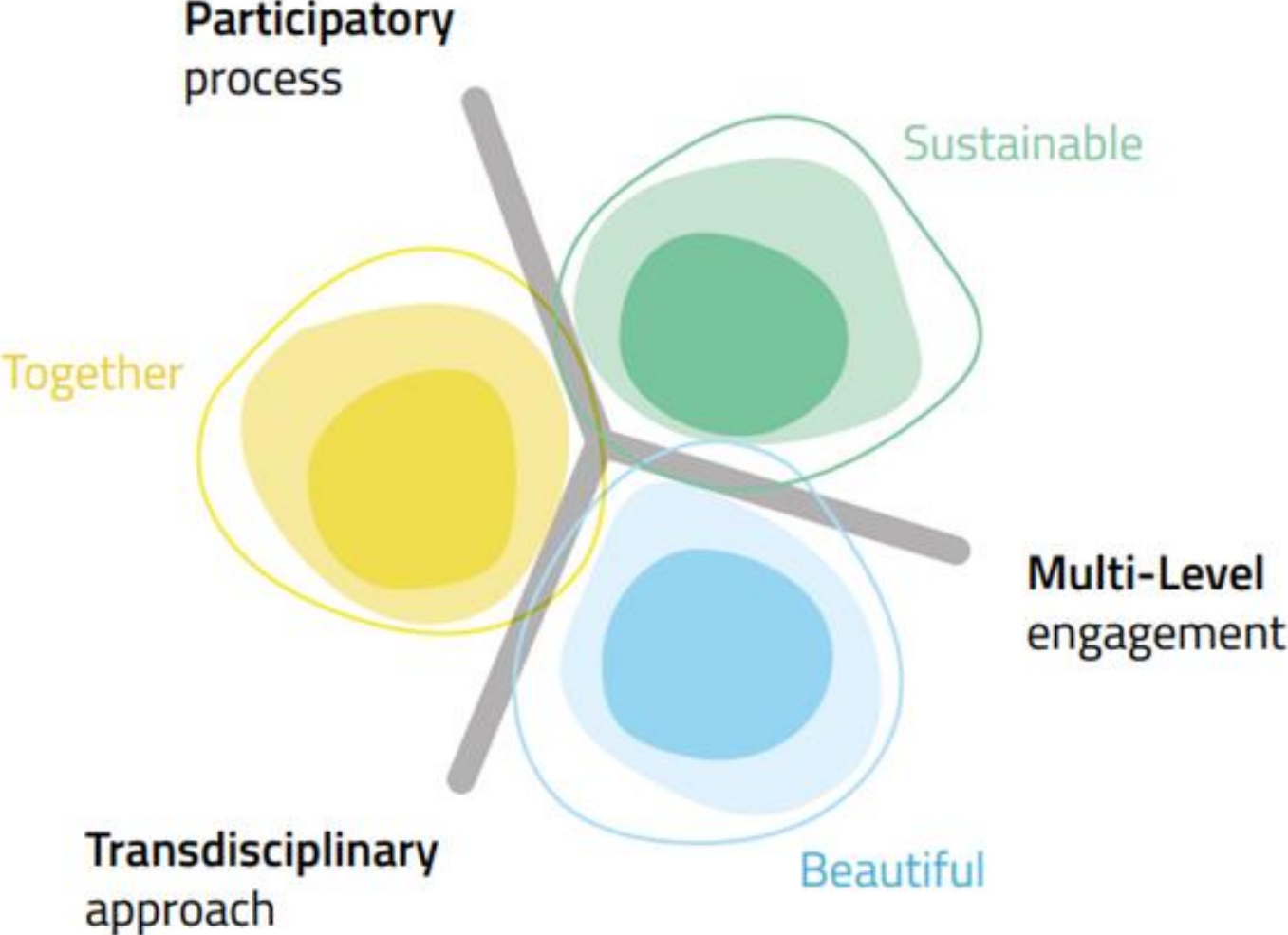


Operational Assessment Criteria

- **Project Design and Logic (12%)**
- **Project feasibility and operational readiness (8%)**
- **Organisational arrangements and operational capacity (5%)**
- **Budget (5%)**



NEB values and working principles



Where to look for NEB values?

- 1.1 The project is in line and relevant to the topic of the Call for Proposals, as presented in the relevant Terms of Reference. The project demonstrates the potential of the new solution to add value in relation to the topic of the Call.

direct
answer

Is the project in line with NEB concept?
Is the project relevant to NEB ambitions?
Does the project demonstrate the potential of the new solution to add value to the NEB concept?



1.2

Urban authority(ies) demonstrate a clear ownership of the project (towards city-led innovation), the proposed solution is relevant for the urban authority(ies) as public institution(s). Urban authority(ies) will be actively involved in the experimentation and/or will play a central role in the Project Partnership

indirect
answer

Does the urban authority know what it wants to gain from the project implementation?

Is it relevant and in line with NEB values?

Where to look for NEB values?

- 1.3 The proposed innovation is relevant for the selected urban area (place-based approach). Data and other evidence allow to analyse the breadth and depth of the challenge at the local level.

indirect
answer

Is the project answering the challenges identified taking into account NEB values?
Is the proposed solution meeting the ambitions of NEB values?



- 3.1 Project's objectives are properly described (specific) and realistic (achievable during implementation timeframe). They are in line with the relevant Call for Proposals
- 3.2 Project's expected results reflect the change in the local situation that the project will generate if the project is successful. They are properly described (specific) and realistic (achievable during implementation timeframe) and are relevant and of sufficient scale to answer the identified challenge.



Are project objectives contributing to NEB values?

Does the project aim at change in the local situation which is in line with NEB's call for change?

indirect
answer

- 4.1 The project demonstrates that the proposed solution will provide a significant and durable contribution to solving the challenges targeted in the identified local context.

Does the project propose a durable contribution to urban transformations in the spirit of NEB?



PARTICIPATORY PROCESS

*"This principle refers to the **degree to which the communities affected by the project are involved in the design, decision-making and implementation phases.** It starts from the premise that a NEB project will always involve civil society or representatives of social groups ('the stakeholders') within a highly participatory framework. The process should progress towards equal relations in defining and implementing a project and empower the local community to manage key processes or outcomes, or enable them to initiate and self-govern future actions in the longer term."*

- 2.4 The wider group of stakeholders has been identified and is involved in the design and implementation of the proposed innovative action.
- 2.5 Participation and co-creation: The project demonstrates that participation and co-creation process with the target groups, citizens, social and economic stakeholders is planned throughout the whole project implementation.
- 3.4 Target groups, end users and/or citizens benefiting from the project outputs and results have been properly identified and quantified. They are relevant and of sufficient scale to contribute to the project's objectives and expected results.

MULTI-LEVEL ENGAGEMENT

"(...) A multi-level NEB project should implement an effective exchange both horizontally (with peers) and vertically (with others operating on a different scale) and then advance to a well-defined collaborative framework integrating the two.

...

- 2.2 The composition of the Partnership is balanced with regards to the relevant governance levels and sectors (vertical and horizontal multi-level and multistakeholder cooperation). Ideally, the quadruple helix is represented in the Partnership.
- 2.3 All Partners have a clear and defined role in the Partnership, matching competences to fulfil their tasks. They complement each other. At least the MUA or one Delivery Partner demonstrates experience in international transfer/networking activities

Where to look for NEB working principles?

MULTI-LEVEL ENGAGEMENT

...

*The highest ambition for a multi-level NEB project is to find ways to reach **a transformational impact beyond its initial scale**, and bridge the local and the global dimension connecting stakeholders who, across various levels, share similar purposes. Doing so, it combines a place-based approach with a systemic thinking. **Effective multi-level collaboration should produce transferable and scalable solutions to disseminate knowledge in a cross-sectoral manner and activate cross-border experimentation with new ideas.**"*

- 4.5 The proposal demonstrates the potential of the solution to be scaled up if proven successful. Sufficient and concrete information has been provided on how this can be done.
- 5.1 The proposal has identified other European urban areas that could benefit from replicating the proposed solution in view of the favourable conditions for transfer (similar contexts, characteristics) or of increasing their innovation potential. The proposal elaborates on how the most suitable Transfer Partners will be identified. If Transfer Partners have already been identified, the proposal specifies these together with the underlying motivations and rationale.
- 5.2 The proposal identifies which main outputs/elements of the proposed solution(s) can be transferred or replicated in further urban areas across EU and which are the basic conditions (e.g. regulatory, technical) and resources (human, financial) that the other urban authorities should ensure in order to adapt and/or replicate, in full or in part the innovative solution in other EU contexts.



**Thank you for
your attention**