

Practical approaches to New European Bauhaus

Daniela Minichberger, Besiana Ninka, Bernhard Schausberger/ Interact / 24.04.2023

Interact



**Co-funded by
the European Union**
Interreg

Agenda

01

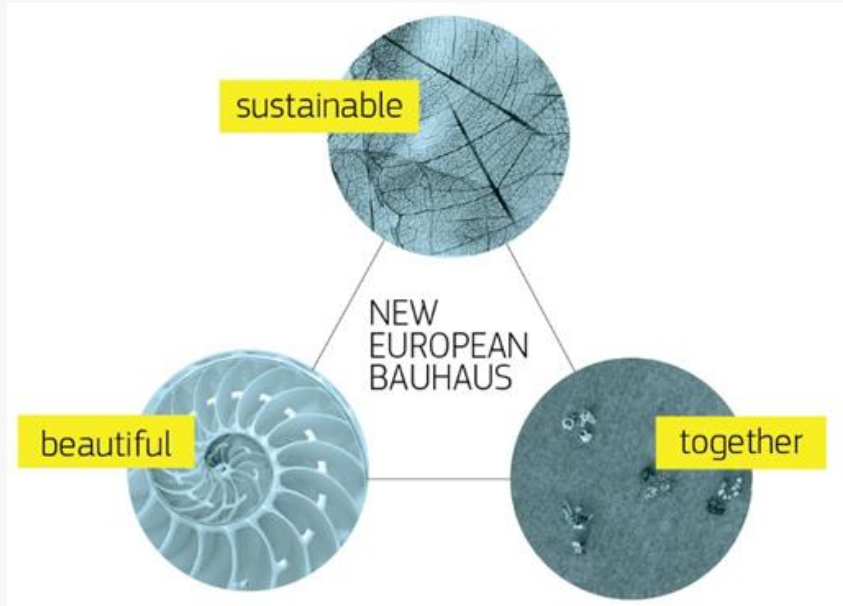
**DG REGIO Update on the
New European Bauhaus**

02

**State of Play: New European
Bauhaus in Interreg
programmes'
Practical examples and
discussion round**

03

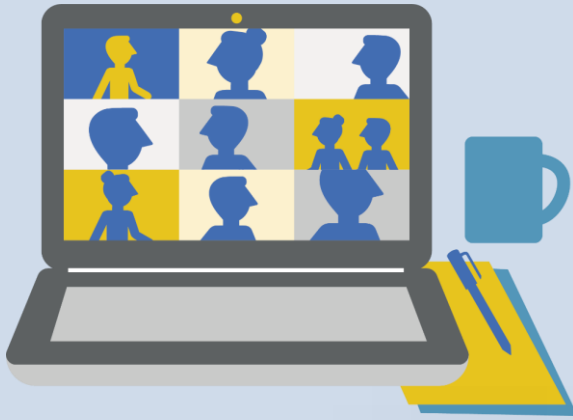
Wrap up and next steps



Objective of the workshop

- ✓ Key aspects and options to integrate it as new quality element in projects
- ✓ Possibility of launching a dedicated NEB call
- ✓ Approaches how to integrate and highlight the NEB principles in standard calls
- ✓ Pragmatic aspects of the selection criteria
- ✓ Proper mechanism to anchor the NEB in the MC discussion
- ✓ The different stages, where the NEB expertise is advantageous





Working agreements

- Stay “muted”, unless talking;
- Be active, ask, contribute and share (any idea is welcome);
- Be open (no recording);
- Be patient;
- Questions/contributions: speak up, raise a hand or use the chat

New European Bauhaus

Interact plans a series of events on the topic of New European Bauhaus, whereby each time we would like to highlight different aspects of it.

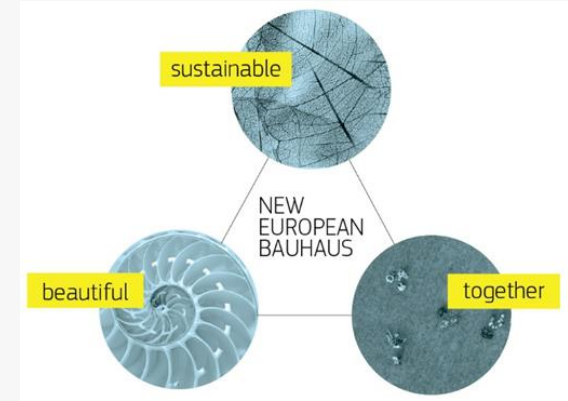
Online, 2 Dec 21
Event on horizontal
principles

Online, 1 June 22
New European
Bauhaus in Interreg

Online, 24 April 23
Practical approaches
to NEB

Online, ?
?

Update on the NEB

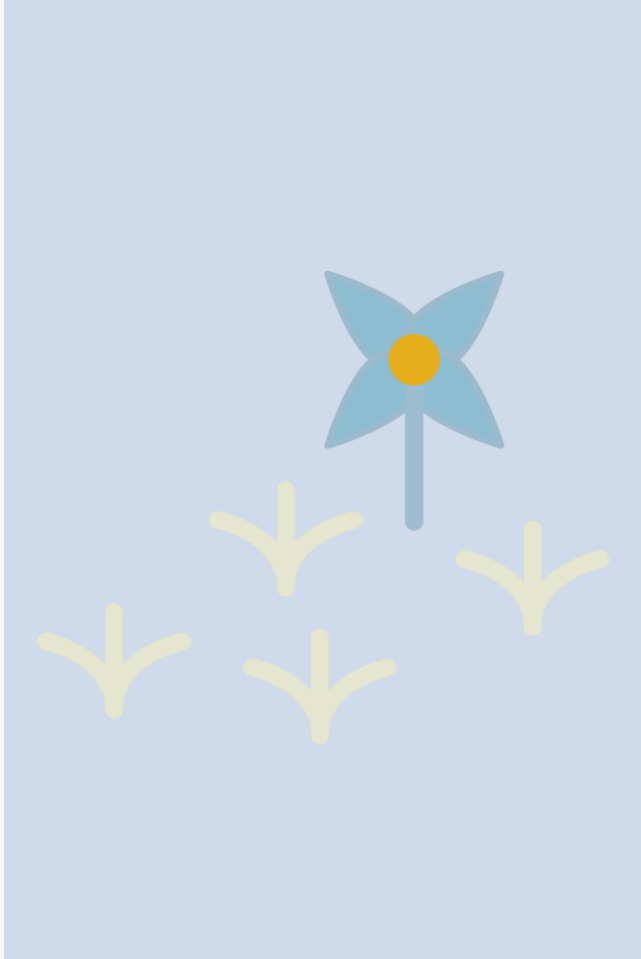


Goncalo VEIGA DA
SILVA

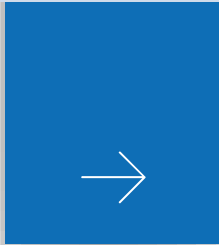
DG REGIO

State of Play: New European Bauhaus in Interreg programmes' Practical examples and discussion round





**The different stages,
where the NEB expertise
is desirable**



How do you plan to integrate the New European Bauhaus element in your projects? (1/2)

- **Preparing for project proposals** that implement the new European Bauhaus.
- We will consider integrating the NEB **in our future calls** for projects.
- During the **quality assessment phase**, the NEB will be assessed.
- **Throughout the project cycle**: ToR for Calls for Proposals with reference to application forms; milestones for implementation.
- Taking into consideration and supporting practices and experiences that will bring sustainable solutions to the climate emergency in the frame of our **climate change adaptation and risk prevention objective**.
- The NEB initiative is mentioned as one of the relevant policies in our IP, due to its cross-cutting nature it could be integrated **as a sort of horizontal principle in different thematic priorities and programme specific objectives**

How do you plan to integrate the New European Bauhaus element in your projects? (2/2)

- The programme **encourages investments** combining the core principles of the NEB (sustainability, aesthetic and inclusion) to find affordable solution for environmental issues of the cooperation area
- **Environmental planning and impact assessment.**
- The Programme also aims to promote Bauhaus values in activities proposed by projects targeting the **enhanced the role of culture and tourism in economic development, social inclusion and social innovation**, which can be sustainable, aesthetic and inclusive. There are concerns regarding durability of results. Due to the largely soft nature character of projects, this dimension may be assessed looking at sustainable proposals for policy change developed in projects
- **Capacity building**

Reflections How?

Strategic choice

Anchoring it as cross-cutting (horizontal) principle or focus on certain specific objectives?

Expertise and targeted guidance

Holistic expertise required – available in-house or external experts (where from?); guidance required (focus on potential flagship projects for effectiveness?)

Communication!

Need for good communication using models to provide food for thought, visions and illustrations to encourage applicants taking principles into their project ideas

Reflections Key Features

Reconnecting with nature; life cycle thinking

Reflected in project relevance when assessing activities and solutions – high end approach to truly sustainable, affordable solutions that are lasting and meet aesthetic standards

Regain a sense of belonging; Prioritising the places and people that need it the most

Participative and inclusive elements in processes triggered by the project; next to distinct activities it often requires specific expertise in the partnership - the quality of the approaches is decisive!

Transdisciplinary approach, visible, local

Transdisciplinary and local aspects will be visible in the partnership (as regards local involvement either direct involvement or proven capacity to do so in a qualitative manner – it is about governance not government!)

Integration of NEB principles in standard calls: Experience from the European Urban Initiative

Kathleen McCarron

European Urban Initiative

Coffee Break

until 14:25



NEB and functional area: communication and implementation of the initiative POCTEP and of the EUROACE Region

Sandra Jorge

CCDR Alentejo

NEB dedicated selection criteria: DG REGIO TA on Support to NEB Local Initiatives

Daria Ivleva

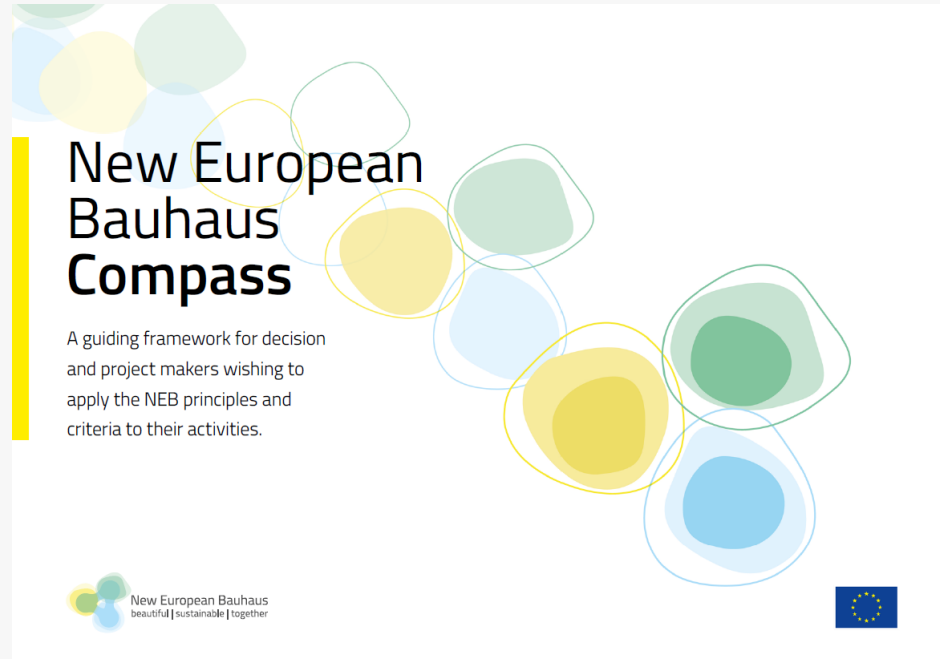
ADELPHI

What are proper mechanisms to anchor the NEB in MC discussions?

**How to raise the profile of NEB in your programme?
COM-CAP-EVAL?**



Additional information



[https://new-european-bauhaus.europa.eu/system/files/2023-01/NEB Compas V 4.pdf](https://new-european-bauhaus.europa.eu/system/files/2023-01/NEB_Compas_V_4.pdf)



<https://adelphi.de/de/system/files/mediathek/bilder/Guidelines-New-European-Bauhaus-Local-Support.pdf>

Our upcoming events

23rd – 25th of May, Ghent (BE) INTERREG Knowledge Fair



Interreg Knowledge Fair is open!

Study The engagement of civil society in Interreg

Focus group with
interested Interreg
programmes.

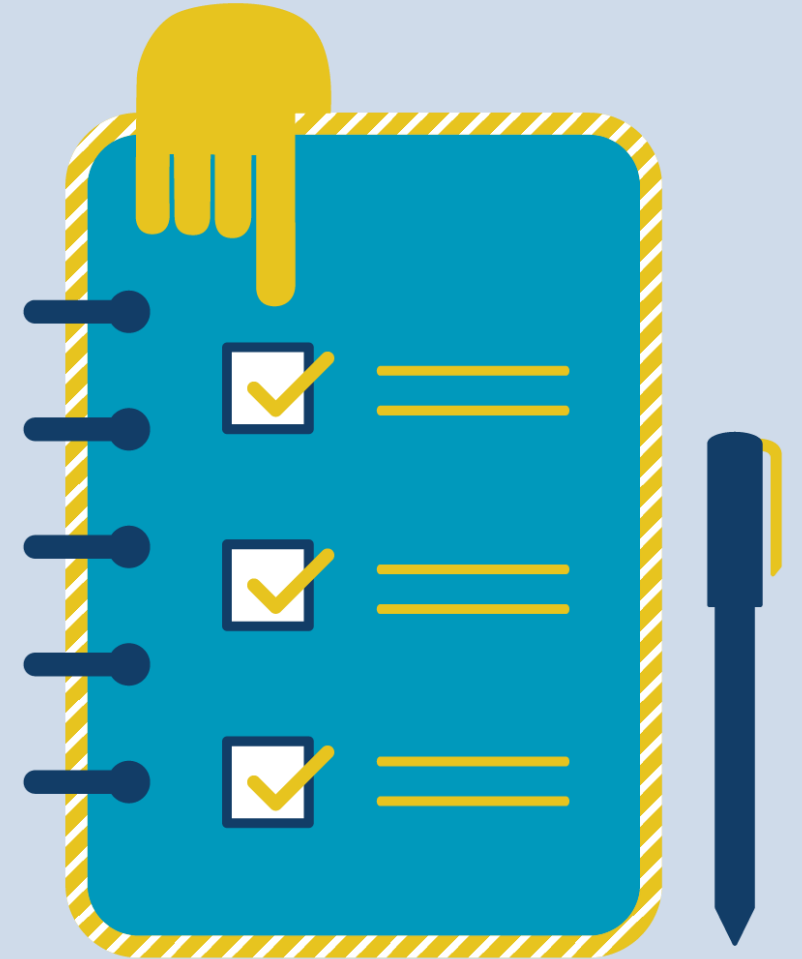
Does this speak to you?
Let us know and join us!



Evaluation survey

Please fill in our evaluation survey.

Thank you very much in advance!



Cooperation **works**

All materials will be available on:

Interact Library at www.interact-eu.net/library