

New partners in Interreg projects



04-05 December 2024

New partners in Interreg projects

Ljubljana | Slovenia





New partners in Interreg projects

04-05 December 2024

Ljubljana | Slovenia

Outlines

"New partners in Interreg projects"

One of the biggest challenges that Interreg programmes are facing is the limited number and variety of project partners participating in their programmes. In many ways, the "Interreg world" is perceived as rather hermetic and prone to complicated and demanding procedures. On top of that, many times programmes compete with other instruments (e.g. mainstream programmes). As a result, many programmes suffer either from lack of projects in general or complain about having the same partnerships applying over and over. It is a serious challenge which may directly affect the overall programme performance (in terms of indicators) or at least compromise innovativeness of the submitted project ideas.

On the other hand, even if a programme may be successful in attracting newcomers, it does not necessarily mean the end of the story. Many times, this is the moment when the real challenges start: the challenge of providing new organisations with effective support. It is never a good idea to leave such partners without increased supervision and dedicated support.

Objectives

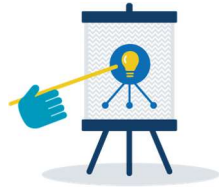
We foresee that the workshop will be based on contributions from all participants, with attendees actively participating in discussions and present their programme practices. Interact will mainly facilitate the workshop and lead the discussion to conclusions that can be shared Europe-wide.

Together we will identify existing and new solutions that programmes can use to encourage and attract new partners to their programmes. We will also exchange on the most effective measures for supporting ongoing projects with inexperienced partners. All this with the aim of positively impacting the quality of the projects.

For who is it for?

The event is intended for experienced Interreg programme staff, mainly from the Joint Secretariats, Managing Authorities and Contact Points who are advising their projects during the development stage, as well as those involved in project assessment and implementation.

To ensure fair representation of participants from all over Europe, and secure the best possible outcome, we will limit the number of participants from each zone (north, south, east, and west) and to one representative per programme.



New partners in Interreg projects

04-05 December 2024

Ljubljana | Slovenia

Day One

Wednesday, 04 December 2024

08.45 – 09.00

Registration and Welcome Coffee / Tea

09.00 – 09.30

Welcome and introduction

Interact

09.30 – 12.30

Session 1: Who are the newcomers?

Interact

- What is a definition of a newcomer?
- Do we really need newcomers?
- What is the added value of having new partners?

The objective of the session is to set up a joint understanding of what a newcomer means and what is an added value of having such partners in Interreg projects.

12.30 – 13.30

Lunch

13.30 – 17.00

Session 2: Lack of certain types of partners in projects.

Interact

- What are the main reasons and obstacles for certain types of partners (e.g. NGOs, private partners, local authorities, etc.) not taking part in Interreg projects?
- Which programme rules can address these challenges, what programme community can do support involvement of new partners.

The objective of the session is to identify the main reasons for missing certain types of partners and to identify programme practises that can address those challenges.

Coffee break (included in the session)



New partners in Interreg projects

04-05 December 2024

Ljubljana | Slovenia

Day Two

Thursday, 05 December 2024

09.00 – 12.30

Session 3: Support to projects with unexperienced partners

Interact

How to effectively support projects with inexperienced partners:

- What are the most common challenges newcomers are facing during project implementation?
- What are the biggest challenges the programme may encounter when dealing with inexperienced partners?
- What are the most effective methods and solutions to support projects with unexperienced partnerships?
- How to deal with problematic partnerships?

The objective of the session is to identify programme practises that can contribute to support projects with unexperienced partnerships.

Coffee break (included in the session)

12.30 – 13.30

Lunch