

TN programmes on territories of MRS:

How are the programmes adding value to the MRS and vice versa?

Daniela Minichberger, Besiana Ninka, Bernhard Schausberger | Interact

| 28.06.2024

Interact



**Co-funded by
the European Union**
Interreg

Agenda

01

Exchange on
expectation's
& key aspects

02

Agree on
common
approach of
the pilot
exercise

03

Capacity
building on M&E
systems in MRS
Andreas Resch

04

Next steps

Objectives

- **Establishing shared understanding:** shared understanding of aims, objectives, and desired outcomes
- **Defining common evaluation frameworks/method:** common evaluation questions, impact pathways, and core messages for communication to stakeholders and policymakers, methods
- **Agreeing on next steps**





Agree on a common approach for the pilot exercise



Why joining forces ...

Enhanced cooperation and synergy: promote closer cooperation among Interreg programmes, foster the identification of shared challenges and the creation of synergies, strengthen the impact of Interreg cooperation;

Efficient evaluation design: streamline evaluation questions & data collection, share evaluation methodologies, align efforts;

Effective voice of Interreg: comparable voices that are more easily understood and heard.

Main principles

This exercise adopts a **bottom-up approach**, allowing participating Interreg programmes to collaboratively select topics for exchange, reflection, and development. It is tailored to **address the specific needs, relevance, and interests of each participating programme**, with multiple pilots running in parallel based on these interests.

Interact will facilitate exchanges within these pilots and **engage external experts to support the development of methodologies**, such as approaches and impact pathways.

Through our collective efforts, we hope to **achieve greater visibility and impact**.



What are your key expectations for this evaluation exercise?

- Gain a bottom line / status quo where we stand and see where the discussion needs to go.
- Interested in improving synergies between the EUSDR and the Interreg programmes
- Possibilities for harmonising Interreg TN and MRS reporting/evaluation tools/methods/approaches
- Jointly evaluate the support of the 2 programme to the EU Strategies not only focused on governance support but also not excluding it
- Prepare the ground for successful implementation of our evaluation activities, look into the support mechanisms to facilitate the implementation of EUSALP

Going beyond a formal requirement

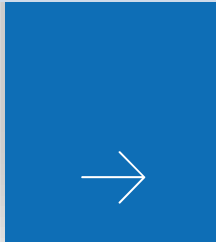
2.1.1.1 Related types of action, and their expected contribution to those specific objectives and to **macroregional strategies and sea-basin strategies**, where appropriate

Reference: point (e)(i) of Article 17(3), point (c)(ii) of Article 17(9)



Capacity building on M&E systems in MRS

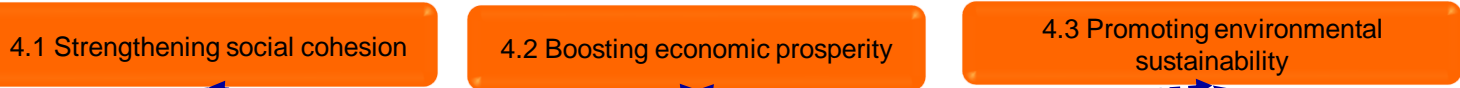
Andreas Resch



Common impact model with pathways for Macro-Regional-Strategies 1.0

Ultimate objective: Tackle common challenges in the macro-region through better coordination and pooling of resources

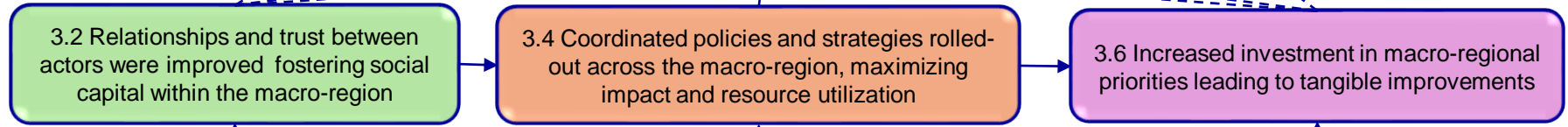
Level 4:
Territorial impact



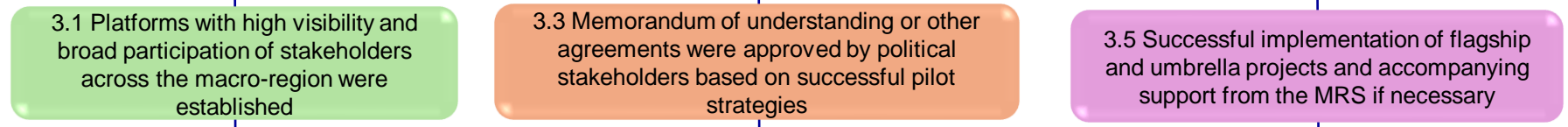
External factors

Accountability ceiling

Level 3:
Longer-term outcomes

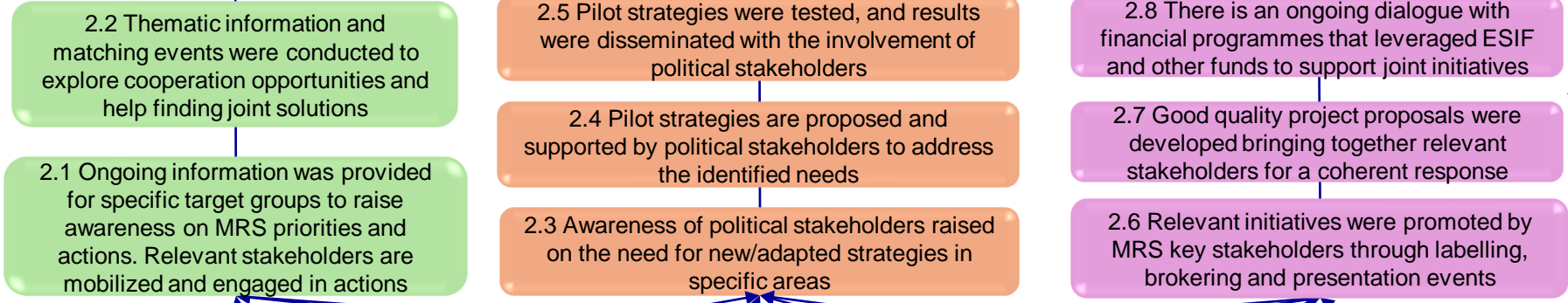


Conditions for success (outside MRS control):

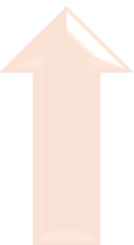


5.7 EU policy priorities support MRS actions
5.6 Legal requirements (e.g. climate law) drive forward joint approaches

Level 2:
Intermediate outcomes



5.5 New funding opportunities (e.g. RRF, JTF etc.) are used
5.4 Enabling rules for embedding are in place

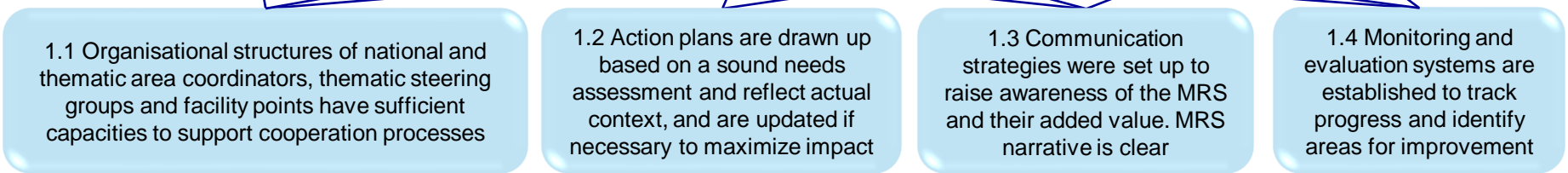


Pathway Networking process

Pathway Policy work

Pathway Project work

Level 1:
Preconditions for successful MRS activities



5.3 Existing institutionell settings can be utilized
5.2 Support by national and regional governments is provided

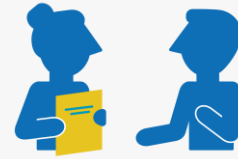
5.1 Support by EU institutions is provided

Possible scenarios



Brief exchange

- **2-3 online meetings**
Exchange of basic information
- Generate new ideas and inspiration
- No common approach required



Extended discussion

- **4-6 online meetings**
- Detailed exchange of information
- Gain inspiration from other programs
- Agree on common evaluation questions

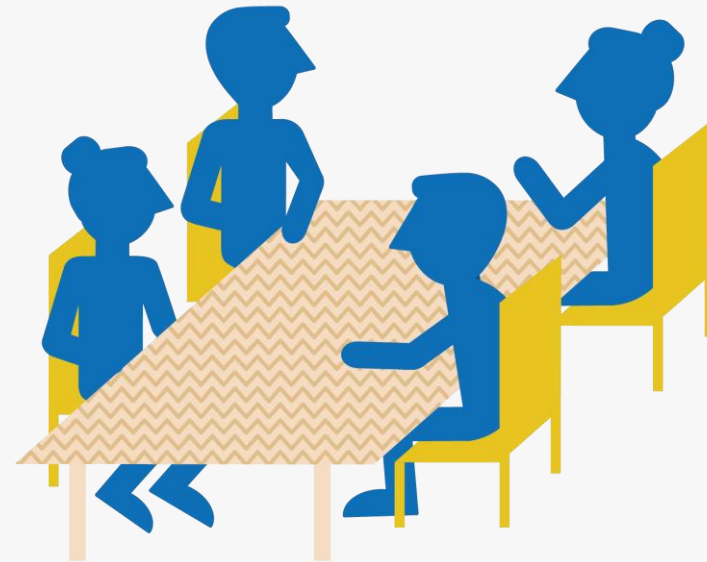


Common approach

- **8-10 online meetings**
- Develop and agree on a common approach
- Jointly develop an impact pathway
- Exchange methods and data
- Share common findings

Floor is open for discussion

To what level of detail would you like to engage in the exchange?

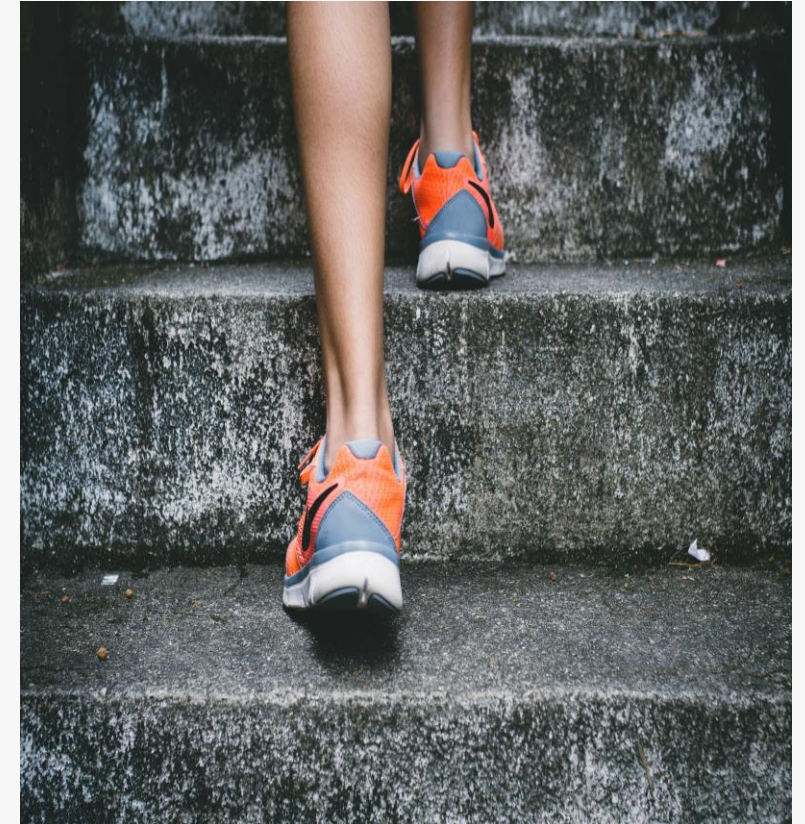


Next steps: main agreements

Next online meeting: 15 October, 9.30-12.00 CET

Agreements and Next Steps

- Begin by exchanging different practices to understand how are the programmes adding value to the MRS and vice versa
- Present concrete examples such as the questions developed and agreed by DRP and the approach taken by Alpine Space (approach to mid-term evaluation for key project)
- Discussing the role and position of the programmes in the model on impact pathways that is currently developed for the MRS



Thank you for being here!

Your opinion matters to us.

Please take a few minutes to provide us with feedback to help us improve our services.



Cooperation works

All materials will be available on:

[Interact connections / Interact library](#)